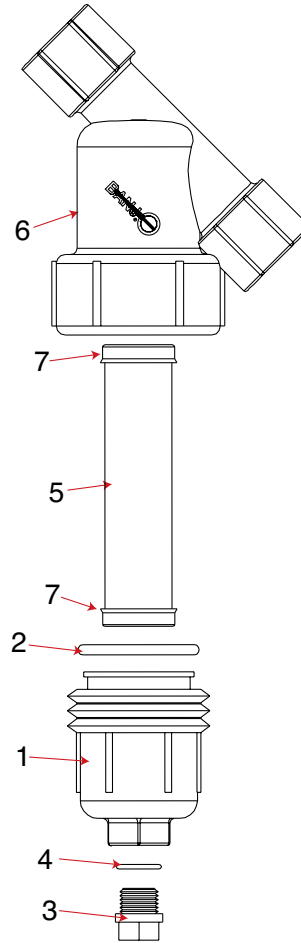


# LINE STRAINERS

## Banjo 1-1/2" And 2" Poly Strainer Parts

REPLACEMENT PARTS 1½"-2" Y STRAINERS		
ITEM	PART NO	DESCRIPTION
1	LS150-C*	1½" - 2" End Cap
2	LS150-G	1½"-2" O-Ring
2	LS150-GV	1½"-2" FKM (viton type) Gasket
3	LSQ200-PL	1" Drain Plug (Fits 1½" - 2")
4	LSQ200-R	1½"-2" EPDM O-Ring for Drain Plug
4	LSQ200-RV	1½"-2" FKM (viton type) O-Ring for Drain Plug
5	LS206	1½"-2" 6 Mesh Screen
5	LS212	1½"-2" 12 Mesh Screen
5	LS220	1½"-2" 20 Mesh Screen
5	LS230	1½"-2" 30 Mesh Screen
5	LS250	1½"-2" 50 Mesh Screen
5	LS280	1½"-2" 80 Mesh Screen
5	LS2100	1½"-2" 100 Mesh Screen
5	LS2120	1½"-2" 120 Mesh Screen
5	LS2150	1½"-2" 120 Mesh Screen
5	LS212P	1½"-2" 12 Mesh All Poly Screen
5	LS220P	1½"-2" 20 Mesh All Poly Screen
5	LS250P	1½"-2" 50 Mesh All Poly Screen
6	LS150-B	1½" Y Body
6	LS200-B	2" Y Body
7	LS141G	1½"-2" EPDM O-Ring
N/A	LS150B/C	1½" Y Body, Cap & Gasket
N/A	LS200B/C	2" Y Body, Cap & Gasket

**NOTE:** Items marked with asterisk\* come with parts 1, 3, and 4.



SCREENS	
MESH SIZE	RIB COLOR
6 MESH	WHITE
12 MESH	BLACK
20 MESH	BEIGE
30 MESH	YELLOW
40 MESH	BROWN
50 MESH	RED
80 MESH	BLUE
100 MESH	GREEN
120 MESH	BLACK



1" 80 Mesh

STANDARD MESHES & DATA (FOR GENERAL USE ONLY)				
MESH	MICRONS	WIRE DIAMETER	OPENING	% OPEN AREA
6 Mesh	3360	.035	.132	62.7
8 Mesh	2380	.028	.097	60.2
12 Mesh	1680	.023	.060	51.8
16 Mesh	1190	.018	.044	50.7
20 Mesh	841	.016	.034	46.2
30 Mesh	595	.012	.021	40.8
40 Mesh	400	.012	.021	36.0
50 Mesh	297	.009	.011	30.3
80 Mesh	177	.0055	.007	31.4
100 Mesh	149	.0045	.005	30.3
120 Mesh	125	.0037	.0046	30.5